

2009 GENERAL INFORMATION

1. Race Headquarters, located at the Holiday Inn Select, (Mill Creek Room) Solomons, Maryland, will be open Noon-5:00PM on Saturday, July 18 and from 8:00AM to 9:00AM and from the end of racing to 6:00PM on Sunday, Monday, and Tuesday, July 19 – 21. Registration will be in the Patuxent Concourse (Isaac's Entrance) located in the Holiday Inn Select, Solomons.
2. All social events will take place at the Holiday Inn Select, Solomons in the courtyard area. A list of daily activities will be posted on the Official Notice Board in the same area.
3. The legal drinking age in Maryland is 21. Minors will not be served and proof of age will be required. Intoxication or discourteous behavior will be grounds for expulsion from the events. Captains and owners will be responsible for the actions of their crew. A BOAT IS SUBJECT TO IMMEDIATE DISQUALIFICATION IF ANY OF IT'S UNDER AGE CREW IS FOUND TO BE ILLEGALLY CONSUMING ALCOHOL.
4. Sail repair service will be available at the Quantum Sail Loft located at 243 "C" Street, Solomons Island, at Zahniser's Yachting Center. Telephone (410) 326-2600

SCREWPILE 2009 SCHEDULE

SATURDAY, JULY 18

- Registration Noon to 5:00PM, located in the Patuxent Concourse (Isaac's Entrance).
- Skippers Meeting 5:15PM main tent in courtyard.

Skippers must pick up their Skippers Package with the Official Entry List, Sailing Instructions, and bow numbers at Race Headquarters, the Patuxent Concourse located in the Holiday Inn.

SUNDAY –TUESDAY, JULY 19 - 21

9:00AM Harbor Start
9:45AM Rendezvous
10:30AM Warning
4:00PM (approx) Protest Hearings ** (see below for locations)
5:00PM - 7:00PM Beverage Ticket Sales ***
5:30PM - 7:30PM Awards Ceremony and Party ***

**The rooms assigned for the Protest hearings are the Mill Creek and Back Creek located off the Patuxent Concourse near the front.

*** These times may change, subject to the Holiday Inn Select.

2009 SAILING INSTRUCTIONS

SMSA is the Organizing Authority of this Regatta

1. RULES

- 1.1 The regatta shall be governed by the 'rules' as defined in the 2009 - 2012 Racing Rules of Sailing (RRS).
- 1.2 The Notice of Regatta, the Official Entry Form, and USCG requirements shall apply.
- 1.3 These Sailing Instructions, including amendments, supersede and will take precedence in the case of conflict with any other rules, Notice of Regatta or Entry Form.

2. NOTICE TO COMPETITORS

- 2.1 Official notices and numbered addenda to these Sailing Instructions will be posted on the Official Notice Board located in the tent party area.
- 2.2 Any changes to these Sailing Instructions will be posted no later than 0830 hours on the day they are to take effect. Any change to the schedule of races will be posted by 1800 on the day before it will take effect.

3. SIGNALS MADE ASHORE

Signals made ashore will be displayed from the flag pole located on the front of the party/award tent.

- 3.1 One horn sound at 9:00AM by the Chief PRO will signal that races will start as scheduled for that day.
- 3.2 Postponement Signal 'AP' displayed ashore with two sound signals by 9:00AM indicates today's start of racing is postponed. Postponement Signal 'AP' lowered ashore with one sound signal indicates either: An abandonment signal (as per SI 3.3) will immediately follow, OR the initial warning signal will be made in not less than 90 minutes. This modifies Race Signal "AP".
- 3.3 Abandonment Signal; 'N over A' all races are abandoned for today.
- 3.4 The intention of the Race Committee, with regard to the start of racing, will be hailed on VHF channel 72 (South Fleet) and VHF channel 69 (North Fleet) channel 68 (West Fleet) at 0900.

4. RADIO USE

- 4.1 The Race Committee will use VHF channel 72 to communicate with the South Fleet, channel 69 to communicate with the North Fleet and channel 68 to communicate with the West Fleet.
- 4.2 The Race Committee will attempt to broadcast on VHF information such as location of RC Boat, sail/bow numbers of boats OCS, course type and range, bearing to windward mark, change of course, etc. Failure to broadcast this information or failure to receive or hear these broadcasts will not be grounds for redress. This modifies RRS 62.1.
- 4.3 The Race Committee will not respond to transmissions from competitors except to acknowledge retirements, notification of protests, acknowledgment of infringements, or requests for emergency assistance.

5. SAFETY

- 5.1 A boat that that retires from a race shall notify the Race Committee as soon as possible.
- 5.2 RRS 40 (Personal Buoyancy) is replaced by: "It shall be the individual responsibility of each competitor to wear adequate personal buoyancy when conditions warrant. US Sailing prescribes that every boat shall carry life-saving equipment conforming to government regulations."

5.3 Boats shall not exercise right of way, cross in close proximity to, or interfere with the reasonable transit of the race area by a freighter, tug, or other commercial vessel. Competitors must take corrective action well in advance of any potentially dangerous situation. A boat protested under this rule has the burden of proof that she complied with this rule. RRS 60.2 is changed to add, "If the Race Committee receives a report of an incident where a boat or boats may have interfered with the commercial traffic, it may protest any boat involved."

6. SCHEDULE OF RACES

6.1 Racing is scheduled for each day from Sunday, July 19, through Tuesday, July 21. There are no scheduled Lay Days.

6.2 It is the intention of the Race Committee to run two or more races on at least two days. The Race Committee will signal its intention to start another race by flying Flag "R" from the Signal Boat at the finish of a race. After finishing each race, competitors shall stand clear of the Finish Line, honoring the starting area boundaries as stated in Sailing Instruction 11.3 until a new starting sequence has commenced. Approximately one (1) minute before the Warning Signal for the first class of each subsequent race, multiple horn signals will be sounded from the Race Committee boat.

7. CLASS FLAGS

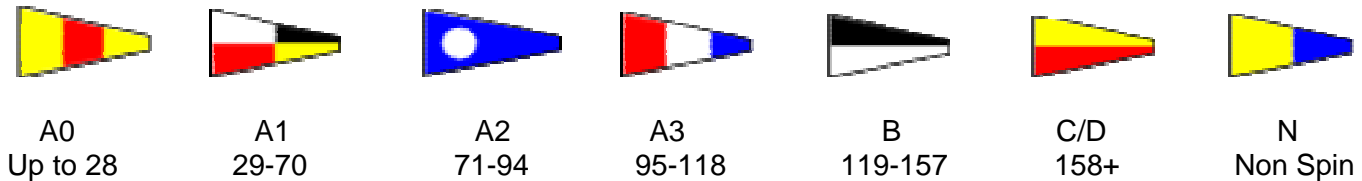
7.1 The "Class Flag" will be the standard 2009 CBYRA Class Identification Flag or as listed in Exhibit 1.

7.2 The class flag shall be displayed on the stern (at least 5 feet up on the backstay, if possible).

7.3 Description of Flags and Pennants to be used...PHRF A0 Pennant Zero (0)---A1 Pennant Nine (9)---A2 Pennant Two (2)---A3 Pennant Three (3)---'B' Pennant Six (6)--- C/D Pennant Seven (7)--- NS Pennant Five (5)--- J/105 Flag V--- Beneteau, 36.7 2nd Substitute--- J/35 Flag K and Multi Hull Flag W.

EXHIBIT 1

PHRF (HANDICAP) CLASS FLAGS

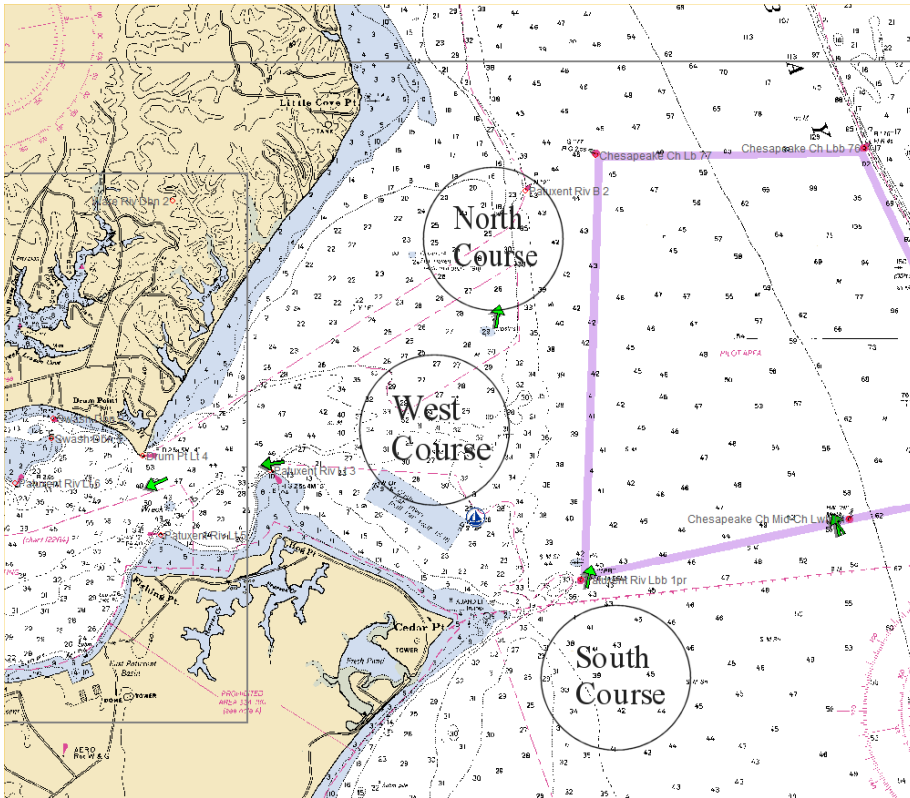


CRUISING ONE DESIGN



8. RACING AREA

There will be three separate racing areas, one for each fleet. The South Fleet shall rendezvous in the vicinity of "1" PR at the mouth of the Patuxent River. The North Fleet shall rendezvous approximately 3 NM from FL.R 2.5 sec "4", Drum Point at a bearing of 070. The West Fleet shall rendezvous in the vicinity of "3" in the Patuxent River.



All competitors are requested as a courtesy to check in with the Race Committee Signal boat prior to the first Warning of the day.

9. COURSES

9.1 Courses for each race will be selected by the Race Committee from the courses outlined on the last page of these instructions.

9.2 The windward-leeward courses chosen for each class will be displayed on the course board on the Race Committee Signal boat prior to the Warning Signal. In addition, the magnetic bearing and distance to the first mark from the Committee Boat and time limit will also be displayed on the course board before the Warning Signal. If course, bearing or distance is unchanged for the later class or classes, there shall be a blank rather than repetition on the course board (see sample next page).

1-3	4-6
4	
300	
3	2.5
3	

(Classes)

(All Classes sail course "4")

(Magnetic bearing to the first mark for all classes is 300°)

(Approximate distance to the first mark for Classes 1-3 is 3 nm; it is 2.5 nm for Classes 4-6)

(Time limit for all classes is 3 hours)

10. MARKS

The windward and leeward marks will be orange inflatable tetrahedrons. Initial change marks will be yellow inflatable balls. The port line starting marks will be a yellow inflatable tetrahedron or a Race Committee port line boat. Downwind finish marks will be yellow inflatable tetrahedrons or a Race Committee port line boat. Upwind finish marks will be yellow inflatable cylinders or a Race Committee port line boat.

11. THE START

11.1 RRS 26 will be used. An addendum will be available at registration detailing fleet assignments.

11.2 The Starting Line will be between a staff displaying an orange flag on the starboard-end Race Committee Signal boat and a staff displaying an orange flag on the port-end Race Committee Start/Finish Line boat, or a yellow tetrahedron. An inflatable buoy may be attached to the stern of the Race Committee Signal and Start/Finish Line boats and shall be considered part of the starting mark for the purpose of RRS 28.1 and 31.

11.3 The Starting Area is defined as the area extending 100 yards to each side of the starting line and enclosed by a 100-yard radius semicircle centered at both ends of the starting line. Boats whose preparatory signal has not been made shall keep clear of the starting area and of all boats whose preparatory signal has been made. Boats that fail to abide by these restrictions may be subject to protest and disqualification.

12. RECALLS

12.1 Individual recalls will be signaled in accordance with RRS 29.1.

12.2 The Race Committee will attempt to notify boats by broadcasting their sail/bow number or Boat Name over the designated VHF channel. Failure of a boat to see or hear her recall notification shall not relieve her of the obligation to start correctly.

12.3 General recalls will be signaled in accordance with RRS 29.2

13. COURSE CHANGE AFTER START

13.1 Course changes after the start will be made in accordance with RRS 33. The new mark will be a yellow inflatable ball for the first change. If a course that has been changed is changed again, the yellow inflatable ball will be replaced with an orange tetrahedron.

13.2 If during the signaling of a course Change, Flag "C" is flown over Flag "F", then the change applies only to boats beginning their last leg to the finish. This changes RRS 33 and Race Signals.

14. THE FINISH

The finish line will be between a staff displaying an orange flag on the Race Committee Finish boat and a staff displaying an orange flag on a nearby Race Committee port line boat or the finish inflatable mark. For downwind finishes if an inflatable is used it will be a yellow tetrahedron. For upwind finishes if an

inflatable is used it will be a yellow cylinder. For downwind finishes, the finish line will be located to leeward to the downwind mark, unless there has been a change to the last leg of the course. For upwind finishes, the finish line will be located upwind of the weather mark, unless there has been a change to the last leg of the course.

15. TIME LIMIT

15.1 Boats still racing that do not finish within 45 minutes of the first boat finishing in her class will be scored the number of finishers plus two. Others will be scored DNF. This changes RRS 35.

16. ALTERNATIVE PENALTIES

16.1 RRS 44.1 is modified by giving a boat the option of taking a Two-Turns Penalty, RRS 44.2 or a Scoring Penalty, RRS 44.3 as modified below.

16.2 RRS 44.3(a) is replaced by: A boat takes a Scoring Penalty by displaying a yellow flag or an "I" flag at the first reasonable opportunity after the incident.

16.3 The Scoring Penalty under 44.3 c shall be the whole number of places (rounding 0.5 upward) nearest to 20% of the number of boats entered. The minimum penalty shall be three (3) places, except that in no case may the boat be scored worse than Did Not Finish. This changes 44.3 c.

16.4 In addition, a boat that complies with some but not all the requirements of 16.2 and 16.3 above, or a boat that acknowledges an infringement of a rule of Part 2 prior to hearing, shall be penalized places nearest to 40% (rounding 0.5 upward) of the number of boats entered. The minimum penalty shall be four (4) places, except that in no case may the boat be scored worse than Did Not Finish. No hearing is required, but a boat may request a hearing on having met the requirements of 16.2 above. This changes 44.3 c.

17. PROTESTS and REDRESS REQUESTS

17.1 Protests shall be written on forms available at the Committee Room and lodged there as soon as possible but not later than 90 minutes after the last boat in the protestor's fleet has finished the last race of the day.

17.2 Protesting boats shall notify the Race Committee of the incident and boat(s) involved immediately following the finish of the race in which the incident occurred. The notification to the Race Committee shall be completed when the Race Committee acknowledges the report by hail. This changes RRS 61.1(a).

17.3 Protest Hearing notices will be posted on the Official Notice Board as soon as possible after the protest time limit. The notice will inform competitors of where and when a hearing on a protest to which they may be a party is to be held. This constitutes notification of race committee or protest committee required under RRS 61.1(b). Protest hearings will be scheduled to start as soon as possible after the notices are posted. The Protest Committee will attempt to hear protests in the order of receipt. Representatives of boats who are parties to the protests shall remain on call in the vicinity of the Protest Committee Office. Competitor's attention is drawn to RRS 63.3(b) (Right to Be Present/failure to attend).

17.4 Decisions of the Protest Committee will be final for determining the award of prizes for this regatta.

18. ARBITRATION

18.1 An arbitration meeting may be scheduled for each protest involving a rule of Part 2 unless the arbitrator deems the protest inappropriate for arbitration. One representative from each party, who was on board at the time of the incident, will meet with the arbitrator. No witness will be permitted. After taking testimony from each representative, the arbitrator will render an opinion:

A. The protest is invalid or no boat broke a rule. If the protestor agrees, the arbitrator will allow the protest to be withdrawn. If the protestor disagrees, the protest committee will schedule a protest hearing.

B. One or both boats broke a rule. The boat(s) breaking a rule may accept a 40% Scoring Penalty and the arbitrator will allow the protest to be withdrawn. If not, the protest committee will schedule a protest hearing.

C. The arbitrator decides a protest hearing is required. The protest committee will schedule a protest hearing

18.2 The arbitrator may allow a protest withdrawn without the approval of the protest committee. This changes RRS 63.1

18.3 For the purposes of RRS 63.2, as needed, all parties shall be prepared for a protest hearing immediately following the arbitration.

18.4 The acceptance of an arbitration penalty cannot be grounds for redress nor can it be appealed nor may either party request a reopening of a hearing.

18.5 The arbitrator may sit in on the protest hearing of any unresolved arbitration meeting.

19. SERIES SCORING

19.1 The regatta will be scored according to the Low Point Scoring System, RRS Appendix A2, except each boat's total score will be the sum of her scores for all races. One race constitutes a series. There shall be no throw outs, modifying RRS A2.

19.2 Handicap scoring will be as follows: PHRF classes will be scored using handicaps provided by PHRF of the Chesapeake.

20. HAULOUT RESTRICTION

Boats shall remain in the water throughout the regatta. A request to haul out a boat must be submitted in writing and approved by the Race Chairman.

21. AWARDS

21.1 Class awards for first, second and third place will be presented daily. For multiple race days, class awards will be presented based on combined scores for the day.

21.2 Class awards for first, second and third positions in the regatta will be presented.

21.3 The Screwpile Lighthouse Challenge 2009 Overall Winner will be awarded the "Calvert County Trophy". The overall winner will be that boat which wins the class with the closest, most competitive racing of the event. This is determined by adding the corrected time differential (elapsed time for one-design classes) between first and fifth place and dividing that total by the total miles raced for each class. The class winner competing in the class with the lowest average time differential between first and fifth (sec/mile) is the "Overall Winner".

21.4 Special Awards for outstanding performance as determined by the Screwpile 2009 Committee may be presented during the awards ceremonies.

22. INSPECTIONS

The Race Committee reserves the right to inspect a boat without prior notification at any time to assure compliance with class rules and safety requirements.

23. CONDUCT

23.1 The Skipper/Owner shall be responsible for all actions of his crew and guests.

23.2 In the event of a serious breach of conduct, sportsmanship, destruction of property, or the failure to comply with the request of the Race Chairman, Race Officer, Committee Member or agent of Screwpile Challenge 2009, the Skipper/Owner will be responsible for all damages and the Screwpile 2009 Race Committee may rescind the boat's entry at any time during the regatta.

24. BOW NUMBERS / EVENT STICKERS

Each boat entered in the regatta will be assigned a bow number. The Skipper's Package will include removable bow numbers and event stickers. The bow numbers shall be displayed on both sides of the bow approximately 6" - 10" below deck level and with the leading edge approximately 10"- 20" aft of the bow. Separate event stickers with the regatta name and sponsor shall be displayed approximately 10" aft of the bow number. Instructions will be included in the Skipper's Package. The bow numbers/event stickers shall be attached to the boat's hull at all times while racing; boats failing to display all bow stickers are subject to protest by the Race Committee.

25. MOVABLE BALLAST

As per PHRF Fleet Policies: "Canting keels and center boards moved by the use of stored energy are allowed if the boat retains self righting ability with the keel or centerboard in any allowed position. This changes RRS 51 and RRS 52 to allow use of stored energy to move a swing or canting keel (dead weight) or centerboard for stability on a boat that has been designed for use of this appendage"

26. DISPOSAL OF REFUSE

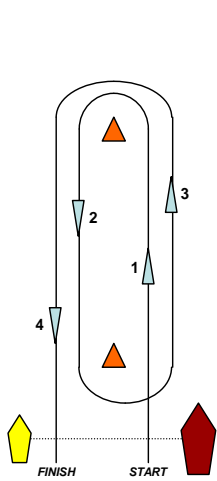
Boats shall not discharge trash into the water. The penalty for breaking this rule will be at the discretion of the Protest Committee. This modifies RRS 64.1(a).

SCREWPILE 2009 WINDWARD – LEEWARD COURSES

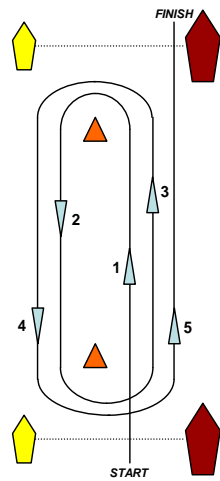
Marks are to be rounded to port. There may be two windward marks used (differentiated on the course board by distance to the windward mark for specific classes). For all courses, the leeward mark has no significance on the last leg of the course. For windward finishes, the windward mark(s) have no significance on the last leg of the course and the finish line will be located to weather of the windward mark(s). The course designation will be equal to the number of legs to be sailed (Example: Course "4" is 4-legs, Course "5" is 5 legs). Offset legs are not considered a leg of the course for designation purposes.

For the multi-hull class(s) only, the leeward mark will be below the starting signal boats and start marks. Multi-hull boats shall not pass between the start signal boats or marks on any down wind leg of the course except for the final leg if the finish is to leeward. Except for their start, multi-hull boats shall not pass between the start signal boats or marks on any windward leg of the race.

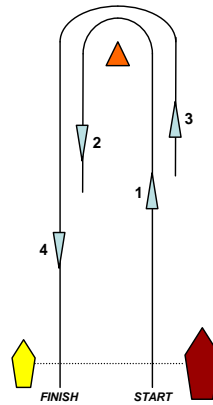
See Course description on page 8



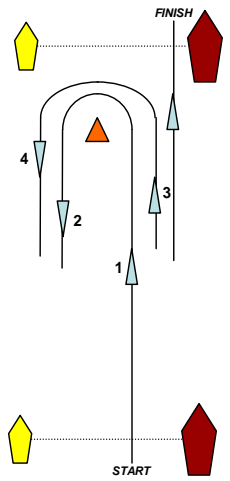
Course
"4"



Course
"5"



Course
"4"



Course
"5"

For All Classes – EXCEPT MULTIHULL

For MULTIHULL Class Only

Course "6" (not shown): START – Windward (1) – Leeward (2) – Windward (3) – Leeward (4) – Windward (5) – Leeward (6) – FINISH